

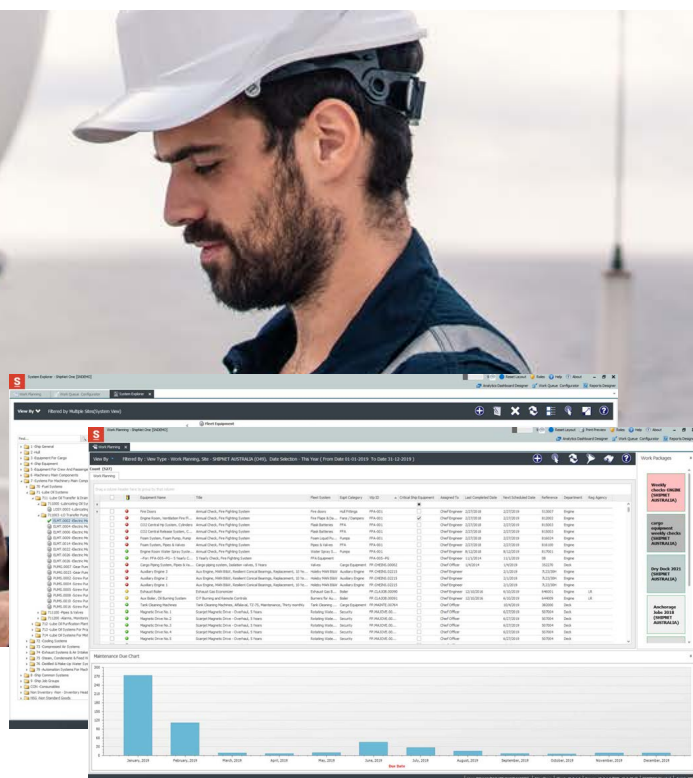
Increase the accessibility of data, while staying up to date with workflows and complying with the latest standards



MARITIME  REDEFINED

TECHNICAL XE

Planned Maintenance & Inventory Management Solutions - Fact Sheet



Technical XE Top 5 Benefits:

1. Clear and structured design of Work Planning.
2. Extensive capabilities to comply with industry & department specific standards
3. Efficiently manage the fleet's planned maintenance structure.
4. Easily keep track of unscheduled work to be completed in a Central Defects module.
5. Mobility - Operate Planned Maintenance, Inventory Management, and safety-related on the go

For More Information

T: +44 1245 943 200
E: info@shipnet.no

Current Technical Challenges within the Shipping Industry

Technical departments within the Shipping Industry are facing increases in administrative inventory workloads, regulatory & risk assessments, and increased pressure to perform data analytics to measure performance.

Aspects are continually missed out in the update process, causing inventories to become out-of-sync when comparing physical items to the records in the inventory management system. Furthermore, achieving optimal inventory for repeated year-round jobs requiring spare parts becomes an onerous task for Seafarers as they struggle to keep up-to-date with order requirements.

With technical departments having increasingly applied regulations, Seafarers are required to enter more information without the necessary checks in place due to increased administrative workloads; this increases the likelihood of data inaccuracy. For example, TMSA 3 introduced guidance on performing risk assessments for critical deferred jobs. Following these assessments have become a huge administrative burden for Seafarers with deferring jobs due to ship scheduling being commonplace.

Finally, with so much data being input into applications today, a range of different BI tools are required with dedicated BI teams who have specialized data mining knowledge to perform analytics and focus on critical areas, which is consistently hard to maintain.

Persona's of the Technical XE Solution

We have focused on solving the fundamental problems be it for a Technical Manager in the office or a Chief Engineer onboard with Technical XE:

- Technical Manager (Or Fleet Manager)
- Seafarer (Typically Chief Engineer)

Introducing Technical XE

Technical XE is a planned maintenance and inventory management solution, built solely for technical departments, enabling them to stay up to date through a clear and structured work planning, providing extensive capabilities to comply with industry regulations & standards; make the management of data accessible, and provide a centralized managed defects list.

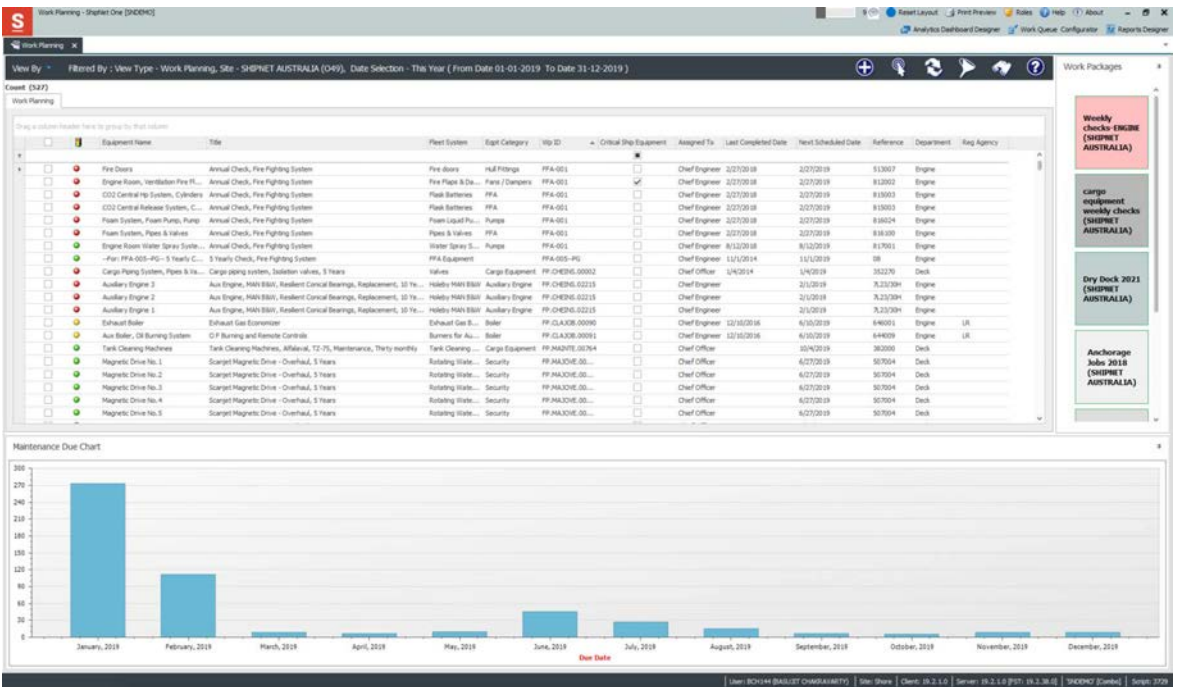


Stay up to date:

Through the clear and structured design of Work Planning, Technical departments have access to the most relevant information across a calendar or for running hour-based activities allowing work to be planned centrally, with precision and always to exact requirements. Avoiding peaks, Work Planning offers the ability of dynamic planning with inbuilt planning charts and an inbuilt workforce analyzer to keep track of workflows across various roles onboard the vessel. Jobs can be rescheduled at short notice while ensuring that jobs are distributed evenly, leading to maximum efficiency.

Technical XE and the One Connected Maritime Platform

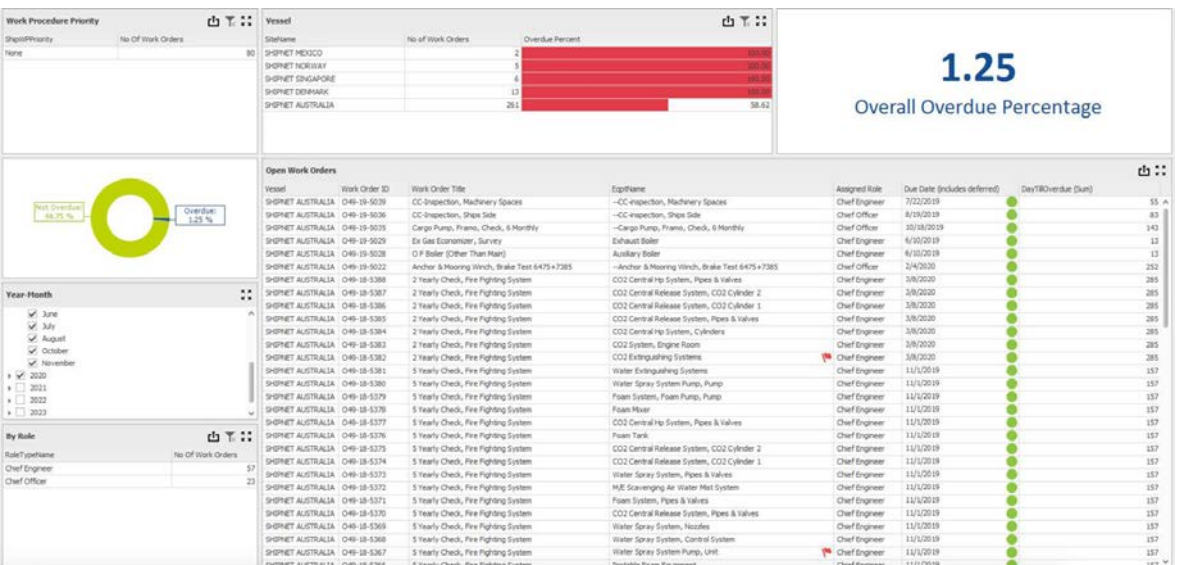
- Technical XE and Procurement XE - A complete synergy of initiating requisitions, landing components for repair or scrapping, and collection of shopping lists for the planning of orders and future estimates regarding spares required.
- Technical XE and Safety XE - Enables users to complete risk assessments while finalizing tasks, follow checklists to make sure required items are covered while helping new engineers to become familiar with work requirements.
- The integrated solutions enable manufacturers' manuals to be linked with work orders, providing Seafarers with a quick and easy reference to maintenance procedures.



Complying to the latest standards:

With the extensive capabilities of customized workflows using the inbuilt work queue configuration engine, ShipNet One's planned maintenance modules provide extensive capabilities to comply with industry as well as department specific requirements. Easily make items mandatory and ensure optimum data collection with linked forms, checklists, risk assessments providing a detailed history for the vessel as well as ensuring Safety compliance onboard. Furthermore, the ShipNet One Planned Maintenance Module is type approved by various classification societies.

[Watch our video on TMSA 3 >>>](#)



- BI Tools - The built-in Business Intelligence within the ShipNet One platform bring quality data analysis to the Technical XE Solution

For More Information

T: +44 1245 943 200
E: info@shipnet.no



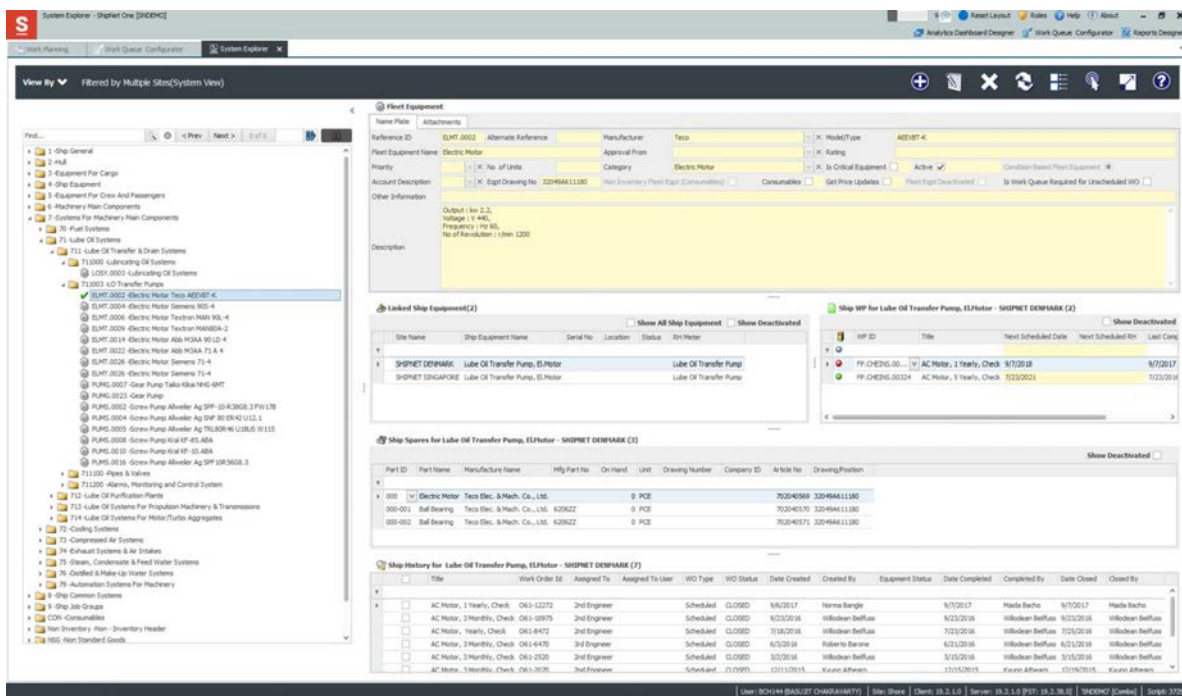
Build your business workflows into our solution:

Gain complete control over your business workflows, with the platforms built-in Workflow Manager. Convert your day to day business processes into the solution to force controls and dependent checks when using the solution.

Make the management of data easy:

Efficiently manage the component hierarchy along with centralized work procedures and spare management all in one module providing complete access to the fleet's planned maintenance structure. With the inbuilt harmonization tools for merging and moving of history between components removes the need to manage data cleanups through the backend or the requirement for database experts. The inbuilt Shipbuilder functionality provides a scalable system for future sister vessels from the yard.

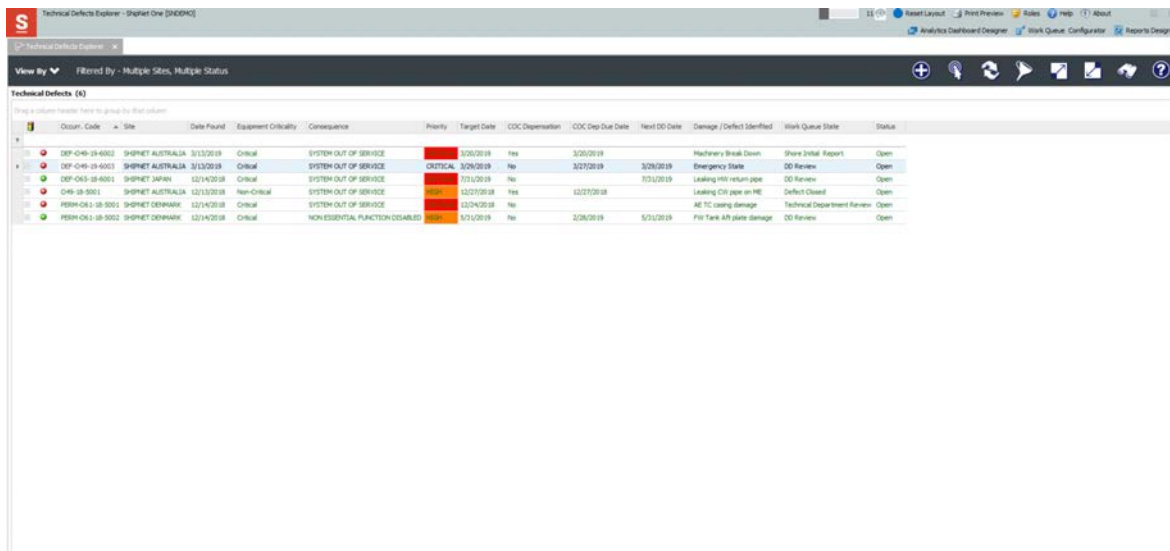
System Explorer:



Centralized Defects List and Management:

Easily keep track of unscheduled work to be completed in a central Defects module. It is possible to raise required purchase orders to order urgent items, set target dates based on criticality and risk assessments to ensure that ships run smoothly while planned repairs and root cause analysis are carried out to capture the most relevant why and prevent the issue from reoccurring.

Technical Defects:



Current Technical Challenges...

Technical departments within the Shipping Industry are facing increases in administrative inventory workloads, regulatory & risk assessments, and increased pressure to perform data analytics to measure performance.

For More Information

T: +44 1245 943 200
E: info@shipnet.no



TMSA 3 - Did you know?...

Through years of development of the Technical XE Planned Maintenance Module and Safety XE solution in conjunction with the world's major shipping companies, the solutions not only meet the requirements but enables continual improvement and encourages efficient compliance with Tanker Management Self Assessment (TMSA 3).

For More Information

T: +44 1245 943 200
E: info@shipnet.no

Mobile 360/Mobility Onboard:

The innovative and award-winning (Shipping Insight) Onboard Mobile Solution is designed to ease the pain for Seafarers of rolling out a new system onboard. The user-friendliness of the system allows onboard users, with limited or no training, to operate Planned Maintenance, Inventory Management, and safety-related matters efficiently. The speed of rolling out ships will no longer be delayed, giving a faster return on investment.

[Watch our video on Mobility Onboard >>](#)



SHIPPINGInsight



Complete Checklists on site



Easy update of Running Hours



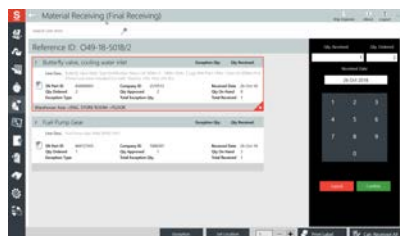
Complete Overview of Ship's systems



Effort Free Inventory Management



Fill up technical forms



Making Receiving Orders Easy



Work Orders On the Go

Cloud Sync:

With ShipNet's native cloud sync technology, information between ships and offices are always in-sync. Removing the need to rely on email or other store and forward systems to synchronize various environments. Security and reliability of transactions have been the core focus of this feature and has been designed to work in the maritime ecosystem.

[Watch our Cloud Sync Video >>](#)



Technical XE and the One Connected Maritime Platform

The core of the Technical XE solution, which consists of planned maintenance and inventory management is integrated as part of the 'One Connected Maritime Platform,' enabling all connected applications to share master data.

Technical XE has a direct connection with Procurement XE providing a complete synergy of initiating requisitions, landing components for repair or scrapping, and collection of shopping lists for the planning of orders and future estimates regarding spares required.

Heavy coupling between the Technical XE and Safety XE applications, enables users to complete risk assessments while finalizing tasks, follow checklists to make sure required items are covered while helping new engineers to become familiar with work requirements. The connection between the two applications also provides maintenance & overhaul history tracking in forms such as Crank Shaft Deflections and Tank Inspection Readings, helping to identify critical areas to focus on in the future. Finally, the integration enables the Technical Defects Module to become the official safety & repair list through providing corrective actions by way of performance of root cause analysis, changes of policies or working with conditions of class and dry dock items.

The integrated solutions enable manufacturers' manuals to be linked with work orders, providing Seafarers with a quick and easy reference to maintenance procedures.

With Mobility Onboard you can...

- Ease the pain for Seafarers of rolling out a new system onboard.
- Allows onboard users, with limited or no training, to operate Planned Maintenance, Inventory Management, and safety-related matters efficiently.
- Reduce the amount of time taken to roll out ships, giving a faster return on investment.

With Cloud Sync you can...

- Ensure information between ships and offices are always in-sync.
- Remove the need to rely on email or other store and forward systems to synchronize various environments.
- Ensure security and reliability of transactions

For More Information

T: +44 1245 943 200
E: info@shipnet.no

